



# SURE-VENT ULTRA TECHNICAL SPECIFICATION

Job Name \_\_\_\_\_ Item # \_\_\_\_\_  
 Location \_\_\_\_\_  
 Engineer \_\_\_\_\_ Contractor \_\_\_\_\_  
 PO # \_\_\_\_\_ Tag \_\_\_\_\_  
 Representative \_\_\_\_\_

## SPECIFICATIONS

The Oatey Sure-Vent Ultra provides a method of allowing air to enter the plumbing drainage system without the use of a vent extended to open air and to prevent sewer gases from escaping into a building. The Sure-Vent Ultra is a one-way air admittance valve designed to allow air to enter the plumbing drainage system when negative pressures develop in the piping system. The device shall close by gravity and seal the vent terminal at zero differential pressure (no flow conditions) and under positive internal pressures. The Oatey Sure-Vent Ultra offers UNMATCHED PERFORMANCE by providing market leading airflow, country specific push-on EPDM gaskets for OPTIMIZED INSTALLATIONS, superior Sweet Spot Technology opening and closing under the smallest pressures, providing a lifetime of reliability.



## APPROVALS & LISTINGS

- EN 12380
- DESIGNATION A1



## FEATURES & MATERIALS

Air Flow Capacity	11.5 L/S (40   50 Valve) 46.8 L/S (80   125 Valve)
Opening Pressure	Sweet Spot™ technology opens at -70 Pa (-0.01 psi) and remains sealed at no pressure.
Maximum tightness pressure rating	10,000 Pa (1M of H2O) at 0 Pa or higher.
Temperature Range	-20°C to +60°C
Diaphragm	EPDM
Body & Cap	ABS
Flexible Connector	EPDM

# SURE-VENT ULTRA AIR ADMITTANCE VALVE

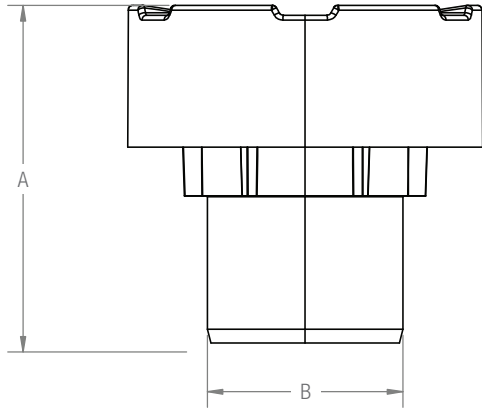
## PRODUCT SELECTOR

EAST ASIA		
Part #	Description	Connection Style
39264	Sure-Vent Ultra 40   50	Push-On Gasket 40 mm   50mm
39273	Sure-Vent Ultra 80   100	Solvent Weld 80mm / Push-On Gasket 100mm
39277	Sure-Vent Ultra 80   125	Solvent Weld 80mm / Push-On Gasket 125mm

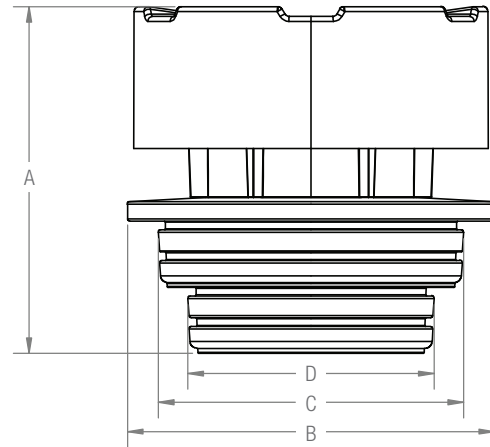


# SURE-VENT ULTRA TECHNICAL SPECIFICATION

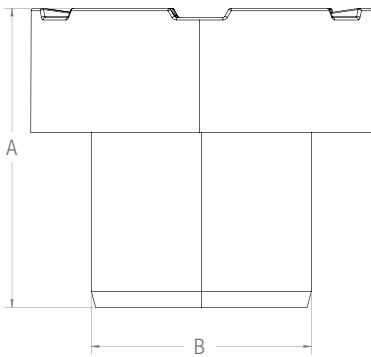
**DN40 SURE-VENT ULTRA VALVE**



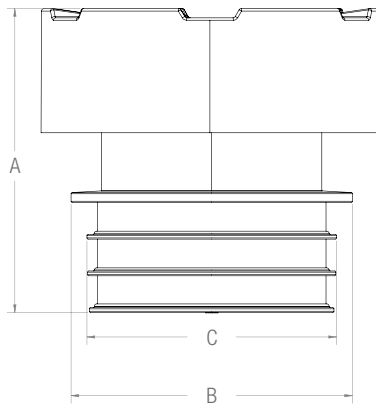
**39264**



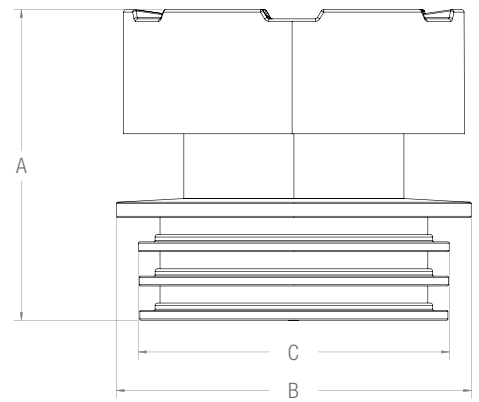
**DN90 SURE-VENT ULTRA VALVE**



**39273**



**39277**



PRODUCT NO.	DESCRIPTION	DIM A	DIM B	DIM C	DIM D
39264	Sure-Vent Ultra 40   50	70.87 mm	75 mm	62.37 mm	50.37 mm
39273	Sure-Vent Ultra 80   100	124.26 mm	115 mm	102 mm	-
39277	Sure-Vent Ultra 125	126.96 mm	145 mm	127 mm	-
DN40 - Valve Only	Sure-Vent Ultra 11.5 L/S	70.87 mm	40 mm	-	-
DN90 - Valve Only	Sure-Vent Ultra 46.8 L./S	122.25 mm	90 mm	-	-

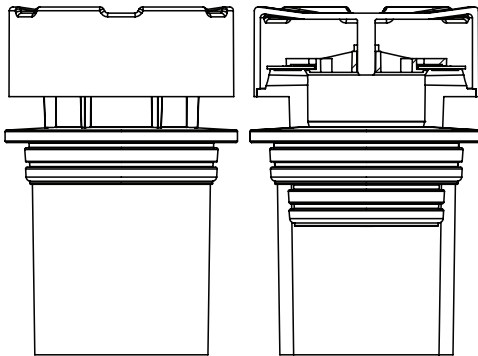


## SURE-VENT ULTRA TECHNICAL SPECIFICATION

### INSTALLATION

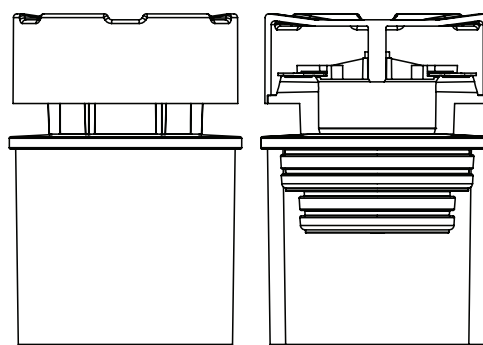
Read installation instructions prior to use of this product. Always consult local plumbing codes prior to installing an AAV. Individual, branch and circuit vents are permitted to terminate with a connection to a Sure-Vent Ultra AAV. The Sure-Vent Ultra AAV will only vent fixtures that are on the same floor and connect to a horizontal branch drain. The horizontal branch drain shall connect to the drainage stack a maximum of four branch intervals from the top of the stack. The Sure-Vent Ultra AAV should be located within the maximum developed length permitted for the vent. The Sure-Vent Ultra AAV must be located a minimum of 100mm above the horizontal branch drain and 150mm above any insulation material and within 5 degrees vertical.

#### East Asia



#### FOR 40MM FITTING\*

1. Must be installed vertically and upright to permit its correct operation (within 5° of vertical)
  - a. The air admittance valve must be in an accessible location. (Allows for free air movement).
2. Ensure AAV will be installed at least 100mm (four inches) above the horizontal branch.
3. Insert Sure-Vent Ultra into a 40mm fitting; the bottom two rings of the Rubber Connector will ensure a seal with the fitting.
  - a. To ensure an easier installation please follow one of the steps listed below:
    - Apply water to the rubber connector.
    - Rubber connector can be removed from the AAV and be installed on the fitting. The AAV can be installed once the rubber connector is fully seated.



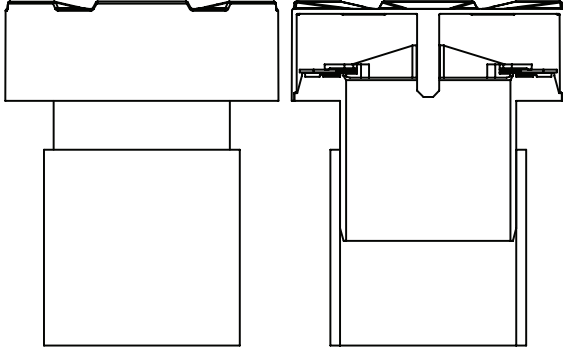
#### FOR 50MM FITTING\*

1. Must be installed vertically and upright to permit its correct operation (within 5° of vertical)
  - a. The air admittance valve must be in an accessible location. (Allows for free air movement).
2. Ensure AAV will be installed at least 100mm (four inches) above the horizontal branch.
3. Insert Sure-Vent Ultra into a 50mm fitting. Insert the bottom 4 rings of the rubber connector until the 5th rib (The “Stop Rib”) bottoms out.

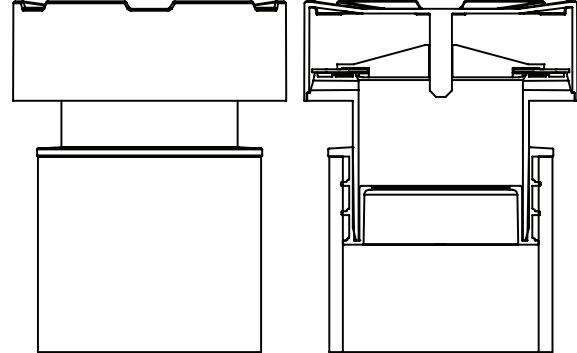
**Note: The 5th rib / Stop Rib should not be inside of the fitting. It should remain visible.**

  - a. To ensure an easier installation please follow one of the steps listed below:
    - Apply water to the rubber connector.
    - Rubber connector can be removed from the AAV and be installed on the fitting. The AAV can be installed once the rubber connector is fully seated.

\* In accordance with Taiwan CNS 1298

**FOR 80MM FITTING\***

1. Must be installed vertically and upright to permit its correct operation (within 5° of vertical)
  - a. The air admittance valve must be in an accessible location. (Allows for free air movement).
2. Ensure AAV will be installed at least 150mm (6 inches) above the highest flood level rim at the floor elevation.
3. Remove the rubber connector from the AAV.
4. Apply solvent cement to the tailpiece of the AAV then press into 80mm fitting.

**FOR 100MM PIPE\***

1. Must be installed vertically and upright to permit its correct operation (within 5° of vertical)
  - a. The air admittance valve must be in an accessible location. (Allows for free air movement).
2. Ensure AAV will be installed at least 150mm (6 inches) above the highest flood level rim at the floor elevation.
3. Insert Sure-Vent Ultra into a 100mm pipe. Insert the rubber connector until the 4th rib (The "Stop Rib") bottoms out.

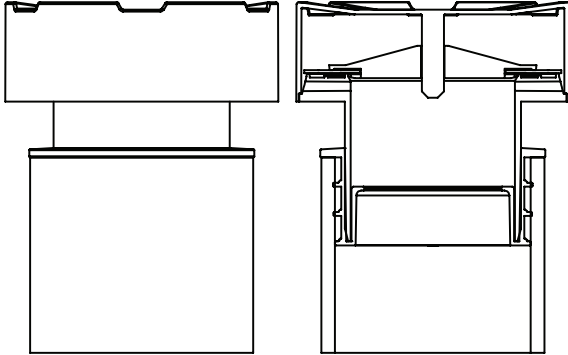
*Note: The 4th rib / Stop Rib should not be inside of the fitting. It should remain visible. Bottom of the AAV (air intake) should not come in contact with the rubber connector. There needs to be 25mm of clearance.*

  - a. To ensure an easier installation please follow one of the steps listed below:
    - Apply water to the rubber connector.
    - Rubber connector can be removed from the AAV and be installed on the fitting. The AAV can be installed once the rubber connector is fully seated.

\* In accordance with Taiwan CNS 1298



## SURE-VENT ULTRA TECHNICAL SPECIFICATION



### FOR 125MM PIPE\*

1. Must be installed vertically and upright to permit its correct operation (within 5° of vertical)
  - a. The air admittance valve must be in an accessible location. (Allows for free air movement).
2. Ensure AAV will be installed at least 150mm (6 inches) above the highest flood level rim at the floor elevation.
3. Insert Sure-Vent Ultra into a 125mm pipe. Insert the rubber connector until the 4th rib (The "Stop Rib") bottoms out.

**Note:** *The 4th rib / Stop Rib should not be inside of the fitting. It should remain visible. Bottom of the AAV (air intake) should not come in contact with the rubber connector. There needs to be 25mm of clearance.*

- a. To ensure an easier installation please follow one of the steps listed below:
  - Apply water to the rubber connector.
  - Rubber connector can be removed from the AAV and be installed on the fitting. The AAV can be installed once the rubber connector is fully seated.

\* In accordance with Taiwan CNS 1298